



Rhode Island Resource Conservation & Development Area Council, Inc.

Helping People Help the Land Since 1973

THERE'S STILL TIME TO SIGN UP FOR THE OCTOBER
WOMEN'S CHAINSAW WORKSHOP!
SEE PAGE 3 FOR DETAILS !

Newsletter of August 2023

ZOOM WEBINAR

**"Managing Habitat to Benefit
At-Risk Rhode Island
Wildlife"**

WOMEN OWNING WOODLANDS

Wednesday, August 16, 2023 from 6:00 PM to 7:00 PM

Please plan to join us for this very cool ZOOM Webinar:



Melissa Hayden

State Biologist for Rhode Island USDA-NRCS

will be with us to discuss habitat for Eastern Cottontail, Northern Long-Eared Bats, Wood Turtles, and Spadefoot Toads



For more **INFORMATION** and to **REGISTER**
contact **Paul Dolan**, RI RC&D Director

Phone: 401-500-0399 or e-mail: rircd2283@gmail.com

Eastern Cottontail



Northern Long-Eared Bat



Spadefoot Toad



Wood Turtle





Curious about
woodland management?

Join us for an Informal Tour of a Managed Family Farm

This tour of a many generational family farm in northern Rhode Island is geared towards women who are interested in learning more about what is involved in managing woodlands and how to get started.

We'll walk the farm and do some tree identification, discuss invasive species and management practices that have been tried on the property. Bring your questions about woodland management and we'll do our best to answer them.

Note:

Although the program is geared towards women, it is open to all.

Saturday, 16 September 2023

10:00 a.m. to Noon

This program is free, but YOU MUST REGISTER to attend.

To register and get details about the location of the tour, please contact

Paul Dolan, Area Director

RI Resource Conservation & Development Council

401-500-0399 or email: rircd2283@gmail.com





Women's Chainsaw Workshop for WOMEN OWNING WOODLANDS



To prepare, you can watch
these videos from the
Forest Stewards Guild:

**Women's Chainsaw Safety
Fundamentals**

Part I

<https://youtu.be/Nq6luz3vNPE>

and **Part II**

<https://youtu.be/HpsXx5Q1e0c>

**These videos ARE NOT A
SUBSTITUTE for in-person
hands-on training and
instruction.**

The videos are intended to
provide **BASIC INFORMATION**
while creating a safe and
welcoming learning environment
for women who are new to
chainsaws.

**Saturday and Sunday
October 14 and 15, 2023**

8:00 a.m. to 4:00 p.m. each day

Cost: \$100

to be paid upon registration.

Lodging and Meals ARE NOT included.

Saturday Session:

**The Instructional Part of the Program
George Washington State Campground
and Management Area**

2185 Putnam Pike, Chepachet, RI 02814

Sunday Session:

**Hands-On Practice & Application
Snake Den Farm**

90 Brown Avenue, Johnston, RI 02819

**Please register early as the course is
LIMITED to 10 participants.**

For more information or to REGISTER Contact

Paul Dolan, RI RC&D Area Director

401-500-0399 rircd2283@gmail.com

This two-day chainsaw safety course was designed for women. The focus is overwhelmingly on safety: safe posture, safe practices, safe clothing, and safe habits. The first session will provide information about chainsaws, maintenance, safety clothing, and introduce participants to good practices.

The second day will be a full day of hands-on practice and application.

Beginners welcome! Come learn chainsaw safety, what safety gear is needed, and what to look for when buying a chainsaw. Learn how to cut firewood, clear brush, and buck small trees safely. PPE required.

This **RI RC&D** program is presented with the support of the
USDA Natural Resource Conservation Service
and the **Forest Stewards Guild.**



Future Planet



[Ancient 'Skywells' Are Keeping Chinese Homes Cool](#)

In rapidly urbanizing China, fewer and fewer people live in "skywell dwellings." Now air-conditioned flats in multi-storeyed buildings and tower blocks are the main forms of homes. But because of a government push for low-carbon innovations, a revival of interest in traditional Chinese architecture is interesting architects. Temperatures inside some of the skywell buildings in southern China can be lower than outside by up to 4.3 degrees Centigrade. [READ MORE](#).



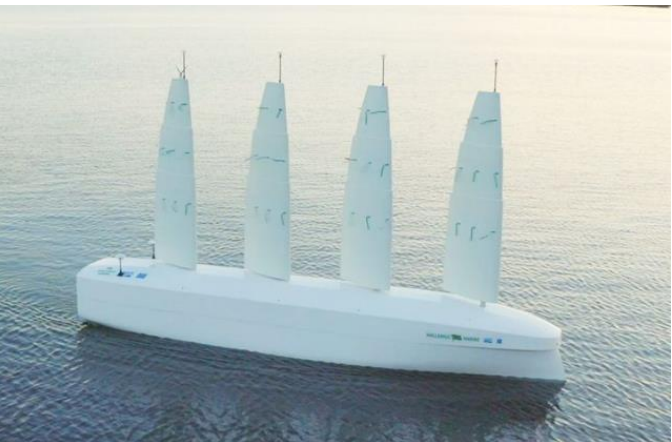
THE WHITEST ROOFS

A team of scientists have designed the "whitest paint ever" which reflects up to 98% of sunlight – compared to commercial white paints that reflect between 80 to 90% of light. The Purdue ultrawhite paint is designed to coat rooftops, cooling the building underneath by as much as 40%.

[How Cities Are Racing to Thwart the Heat](#)

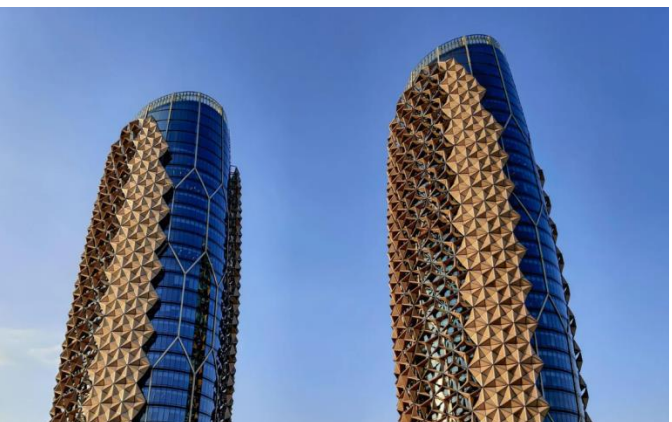
Austin, TX, set out a coordinated approach to provide cooling relief to vulnerable populations at times of crisis ... backup fans which the public can access during emergencies, and a push to ensure people could access community facilities with air conditioning...

It also developed an urban forest canopy for the city to ensure cool outdoor spaces. The city has now applied for a United States Department of Agriculture (USDA) grant to plant more trees after finding the tree canopy coverage was helping Austin to adapt to hotter temperatures.... Chicago, New York, and other large cities are following suit... [READ MORE](#)



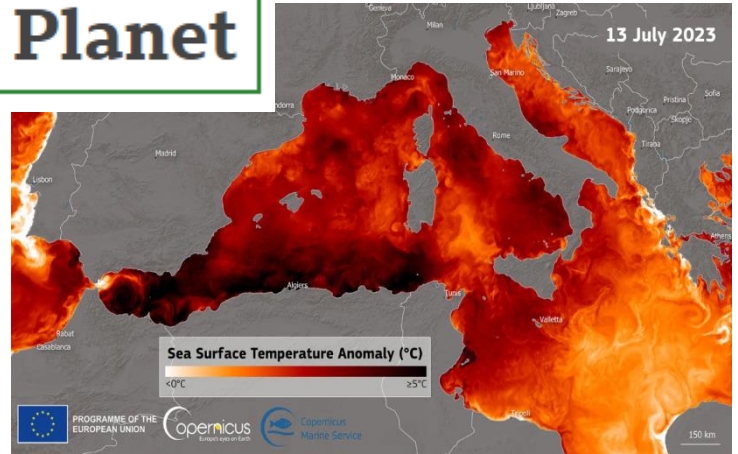
[What would net-zero shipping look like?](#)

Shipping is a highly polluting industry, responsible for nearly 3% of global emissions and generating around one billion tonnes of greenhouse gases each year... If it were a country, the shipping industry would be the sixth largest polluter in the world... At a UN summit, countries have agreed to curb shipping emissions to net zero "by or around 2050"... Reducing maritime emissions rapidly in the next three decades will require new regulations, infrastructure and fuels. But what might green shipping of the future look like? [READ MORE](#)



[India's Lattice Buildings Cool without Air Conditioning](#)

For centuries, India's architecture featured intricate lattice structures. Now, it's making a comeback... Streams of light perforate the intricate jaali screens, creating a sublime effect of lighting and depth. Along with energy-saving lights, this architectural feature helps keep the building's carbon footprint low and is one of the reasons the office has a LEED (Leadership in Energy and Environmental Design) platinum rating, the US Green Building Council's highest sustainability certification.. [READ MORE](#)



These are urban heat map images captured from space. They show the dramatic impact of green spaces, white road surfaces and water on cities, helping them cool in a natural way and resist the rise of deadly heat waves. Mapping these extreme hotspots is a vital asset to city planners as the world warms up and heat-related deaths continue to rise... [READ MORE](#)



Hops for beer flourish under solar panels

They're not the only crop thriving in the shade. Solar panels atop crops has been gaining traction in recent years as incentives and demand for clean energy skyrocket. Researchers look into making the best use of agricultural land, and farmers seek ways to shield their crops from blistering heat, keep in moisture and potentially increase yields. The team in Germany says its effort is the first agrivoltaic project that's solely focused on hops, but projects have sprouted around the world in several countries for a variety of grains, fruits and vegetables. [READ MORE](#)



Bees, sheep, crops: Solar developers tout multiple benefits

MONTICELLO, Minnesota (AP) — Silflower was among native plants that blanketed the vast North American prairie until settlers developed farms and cities. Nowadays confined largely to roadsides and ditches, the long-stemmed cousin of the sunflower may be poised for a comeback, thanks to solar energy... Researchers are growing silflower at nine solar installations in the Minneapolis area, testing its potential as an oilseed crop. The deep-rooted perennial also offers forage for livestock and desperately needed habitat for bees, butterflies and hummingbirds. [READ MORE..](#)

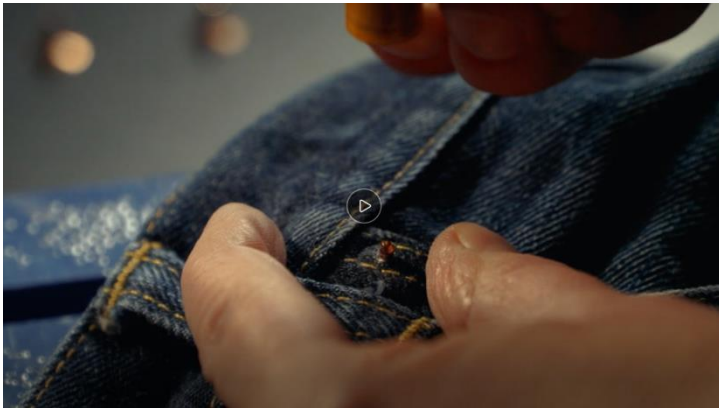


[Nine miles of Rhode Island power lines, substations to be replaced to carry offshore wind power](#)

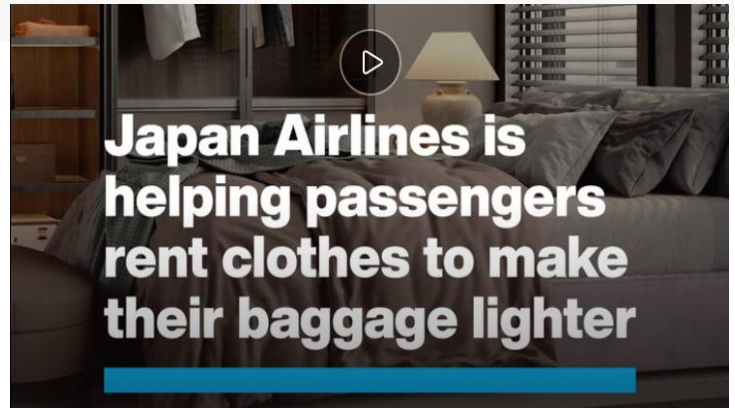
Rhode Island Energy (RIE) has begun work to replace nine miles of power lines to allow power from the upcoming [Revolution Wind](#) offshore wind farm to be added to the grid.

The current infrastructure is not robust enough to handle the new conductor that is needed to handle the load from Revolution Wind, RIE said. The power lines are being rebuilt in North Kingstown, East Greenwich and Warwick.

[READ MORE](#)



[France will help pay for people's clothing repairs](#)



[Japan Airlines is helping passengers rent clothes to make their baggage lighter](#)

AND

[Air travelers can make their baggage lighter](#)



[Turnstile Turbines](#)

Europe is going through an unprecedented energy crisis. Governments are asking people to make efforts at all levels to avoid power cuts. Crisis are always an opportunity to rethink and improve existing things. Iberdrola, the European leading wind energy provider decided to show people that energy sources exist everywhere. [WATCH](#)

[The Mystery of Mexico's Vanishing Stream Oaks](#)

Mexico has more species of oak tree than any other country. In recent years, the saplings of one of its most vulnerable and well-loved oak species have disappeared... These trees descend from ancestors that lived more than 50 million years ago and their species has faced, and survived, any number of challenges... Today fewer than 5,000 of them are still standing.. [READ MORE](#)



FOREST HISTORY



[America's Forests: A History of Resiliency and Recovery](#)

At the dawn of the seventeenth century, America's first European settlers stood in awe before a seemingly endless forest that blanketed the eastern third of the nation... in 1865, the inexhaustibility of forests was finally called into question...

This old video from 1993 contains rare film footage and turn-of-the-century photographs graphically depict the forest, watershed, and wildlife conditions which led to our first national conservation movement... [WATCH](#)



[Forest History Society](#)

The Forest History Society is an nonprofit library and archives that collects, preserves, and shares the world's forest and conservation history... [MORE](#)



[American Forests](#)

In 1875, led by physician and horticulturist Dr. John Aston Warder, concerned citizens founded the American Forestry Association (now American Forests) in response to rapid and wasteful postwar development and intense wildfires....



[New England Forestry Foundation](#)

In the 1930s and 40s, an eclectic group of foresters and outdoor enthusiasts led by Harris Reynolds grew concerned about clear-cutting and destructive management on private New England forestlands. Much of the region's once vast and ecologically rich forests had only just begun to regenerate after centuries of deforestation, and parcel owners often acted with an eye to quick profit or simply lacked an understanding of how to care for a forest.



RHODE ISLAND WOODS

Your online resource for RI woodlots information

Land Stewardship for Small Forested Properties

What is Woodscaping? Woodscaping is a term for active management of small woodland parcels (in Rhode Island a small woodland parcel is considered to be less than 10 acres) in suburban and rural areas where more and more people are living. It is land stewardship that is done in a way that respects ecological values at the same time that it meets landowner goals such as creating a walking or skiing path, watching birds, enjoying privacy, cutting firewood or timber, making maple syrup, or other activities.

Why Care About Protecting Small Tracts of Rhode Island Forestland?

- Small acreage forest ownerships are on the rise
- The pattern of small forest and meadow ownership magnifies pressure on public water supply, wildlife habitat and wood supply
- Wise stewardship depends on the many people that own and care for their property
- Existing stewardship programs are aimed at larger woodland tracts, but not smaller ones

The [Woodscaping TOC](#) (Table of Contents) has links to Fact Sheets and Resources for helping owners become good steward of their land.



The American Tree Farm Program

We grow stewardship from the roots.

[Rhode Island Tree Farm Program](#)

The American Tree Farm System is a program for woodland owners who are committed to sustainably managing their woods for wood, water, wildlife and recreation. Each state program is run by a diverse group of partners, such as state agencies, non-profit organizations, volunteers, foresters and landowners.

To learn more, please contact **Marc Tremblay**,
Phone: 401-568-3410 or Email: mstremb@cox.net



Rhode Island Forest Health Works RCPP

[The Rhode Island Forest Health Works Regional Conservation Partnership Program](#)

The RI Department of Environmental Management (DEM) Division of Forest Environment and ten partners will leverage over \$3.9M in 5 years under 2021 RCPP to permanently protect over 2,000 acres of critical, privately owned forest lands to combat fragmentation and improve wildlife habitat. Funding is provided through a competitive process. For more information about the next application cycle, please contact them.

RESOURCES FOR WOODLOT OWNERS—



Rhode Island Forest Conservators Organization

Helping to Safeguard Rhode Island's Woodlands

Rhode Island Forest Conservators Organization (RIFCO) is a non-profit organization dedicated to the protection and wise use of Rhode Island's woodland resources.



To receive the [RIFCO](#) monthly e-newsletter

"[The Forest Conservationist](#)," visit our [Contact](#) page and submit a request online.
Or [Join RIFCO](#) and automatically receive a subscription as a [RIFCO](#) member.



STATE OF RHODE ISLAND

Department of Environmental
Management

About Agriculture & Forest Environment

The health and vitality of our lands, waters, and communities support our way of life and economy in Rhode Island. The Rhode Island Division of Agriculture and Forest Environment works to sustain, promote, and enhance Rhode Island's agricultural viability and preserve, manage, and promote healthy forests and community trees for today and for generations to come.

[Animal Health Program](#)

[RI Grown: Eat Fresh, Buy Local](#)

[Produce Safety Program](#)

[Agriculture Grant Opportunities](#)

[LASA Grant Program](#)

[Pesticides Program](#)

[Urban Forestry Program](#)

[Forest Health Program](#)

[Wild Fire Program](#)

[Pest Alerts](#)

[Spotted Lanternfly](#)

[Forest Stewardship](#)

THE UNIVERSITY OF RHODE ISLAND

Plant Sciences and Entomology

College of the Environment and Life Sciences

Rhode Islanders have a unique relationship to the environment—and for our communities, ornamental plants, turf, agritourism, and conservation lands are as important as food crops. Our programs in ornamental horticulture, turfgrass management, food crop production, and control of invasive species, and insect-vectored diseases support all these aspects of the local economy. You'll be fully prepared for a job in agricultural industries, or to conduct your own research.

RESOURCES FOR WOODLOT OWNERS—

[RIWP: Your Online Resource for RI Forest Information](#)



The Rhode Island Woodland Partnership (RIWP) advances the stewardship and long-term protection of Rhode Island's woodlands to benefit the local economy, ecological values, and community enjoyment and health. The RIWP strives to increase the impact of forest conservation measures through education and information sharing.

RI DEM

[Forest Stewardship Program](#)

This program was developed for woodland owners who want to know more about their woodland and how to manage it. The Rhode Island FSP, in cooperation with the [USDA Forest Service](#), supports private forest landowners' efforts to manage, enjoy, and care for their land long-term. This program is designed to both recognize the public benefits of privately-owned working lands and good land management, and to help private landowners protect the ecosystem benefits and value of their forest.



[USDA Environmental Quality Incentives RI](#)

[EQIP Forestry Initiative Information](#)

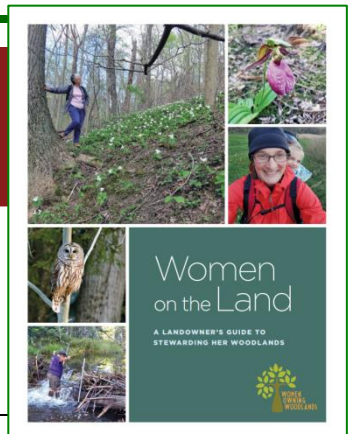
The Environmental Quality Incentives Program (EQIP) is a voluntary program for people who want to develop and improve wildlife habitat primarily on private land. Applicants with forestland or in fields with 25 percent more woody cover (aerial canopy cover) of tree species and who wish to install practices that will protect or enhance fish and wildlife habitat should apply to this initiative.

[American Forest Foundation Newsletter](#)

Sign up and receive updates from the **AFF** and/or its signature programs: the [American Tree Farm System](#) (ATFS) and [My Land Plan](#)

UMassAmherst

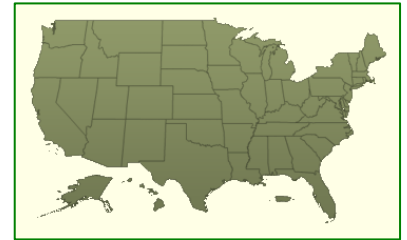
[Women on the Land](#) aims to build a network of female landowners and stewards in Massachusetts and provide opportunities for education and connection. We host events throughout the year and encourage women to foster relationships with each other and their land.



RESOURCES FOR WOODLOT OWNERS—



It is a misconception that a healthy forest is always an untouched forest. The health of your forest may depend on active forest management. A forest management plan is the road map to successful long-term management of your forest. With your forester, you need to evaluate your property's physical attributes and your management activities and the steps you can take to safeguard the environment. This lets you find out where your starting point is. [Forest*A*Syst](#) can assist you in making the choices in balancing your desires for managing your forest.



[PROFILE YOUR LAND](#)



CENTER for
RURAL AFFAIRS

[WOMEN NON-OPERATOR LANDOWNERS](#)

More than 50 percent of farmland in the U.S. is owned or co-owned by women. Center for Rural Affairs has designed workshops and learning circles specifically for women non-operator farmland owners. The peer-based model of learning circles assist women landowners with connecting to resources that aren't reaching them, and women prefer the intimate women-only setting. Whether the farmland was recently inherited, owned for years in a trust, or the land is going through a transition, learning circles provide opportunities for women to connect with programs, resources, and one another.



As the first forestry consulting business to focus on women landowners, [Land and Ladies](#) offers three different ways for women to be engaged, and start taking their ownership by the reins OR to the next level. They equip women with the resources to tackle their landowner and forest management needs through their programs, membership and online resources.



They also offer a **FREE Online Beginner Landowner Course**, short course modules offering insight on hot topics like land objectives, planning, record keeping, and ways to make your land profitable.

[American Women: A guide to Women's History Resources at the Library of Congress](#)





American Farmland Trust Announces Nationwide Network of Service Providers to Help [Transitioning Land to the Next Generation](#)

The successful transfer of land to the next generation of farmers and ranchers will also require a transfer of knowledge and skills. More than 40 percent of American farmland is owned by seniors aged 65 and older, who are likely to retire in the next decade or so. Given the demographics, American Farmland Trust estimates that 371 million acres, or one-third of U.S. farmland, will likely transition to new ownership in the next 15 years.



[ORGANIC FARM FUNDING RESOURCES](#)

Get Help Expanding, Improving, or Starting Your Organic Farm.

Are you a beginning farmer? Are you an established farmer? Do you need assistance with certification costs or creating value-added products on your farm? Are you looking to transition your farm from conventional to organic practices? The following resources provide funding and other assistance. One of the biggest hurdles to transitioning land to organic or enhancing conservation on the farm is securing the funds to make it possible. Rodale's resources can help



Conserving natural resources **FOR OUR FUTURE**



NACD's Guide to [Energy Conservation Opportunities in Agriculture](#) (PDF)

NACD's mission is to promote responsible management and conservation of natural resources on all lands by representing locally-led conservation districts and their associations through grassroots advocacy, education and partnerships.

Stressed out? Need some help resolving **Agricultural Issues?**



Farm Ranch Stress Assistance Network RI

FRSAN RI

Help Is On the Way!

RI DEM- Division of Agriculture and the Center for Mediation and Collaboration are partnering to launch a mental health and wellness program for farmers, commercial fishers, and workers in forestry-related industries.

Workers in the farm, fisheries, and forestry (FFF) communities work in isolating, dangerous, and economically uncertain occupations where depression, anxiety, and suicidal thoughts are not uncommon.

We are bringing together stakeholders across the state to address the root causes of stress, and provide foundational supports to our farm, fishery and forestry communities.

What Support Could Look Like

- Financial Planning
- Succession Planning
- Tax Assistance
- Employee Training and Retention Programs
- Land Access
- Child Care
- Substance Use Disorder Support
- Counseling

Steering Committee Members

RI-DEM Division of Agriculture, Center for Mediation and Collaboration RI, Commerce RI, Commercial Fisheries Center of RI, Farm Fresh RI, East Coast Shellfish Growers Association, Hope & Main, Northeast Organic Farmers Association-RI, RI Conservation Districts, RI Farm Bureau, RI Food Policy Council, RI Land Trust Council, RI Nursery and Landscape Association, Southside Community Land Trust, Tomaquag Museum, URI Cooperative Extension, Young Farmer Network of Southeastern New England

Need Help Now?

401.414.LINK(5465) BH Link
800-273-8255 National Suicide Prevention Hotline
1-800-327-6243 Farm Aid Hotline

For information/support please reach contact Laurel Witri laurel@cmcri.org.

For information/support **1-800-327-6243** or email Laurel Witri laurel@cmcri.org

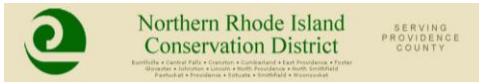


Rhode Island Association of Conservation Districts

Helping Rhode Island Conservation Districts Help Rhode Island

conserving
natural resources
for our future

2283 Hartford Avenue
Johnston, RI 02919
401-934-0840



Northern Rhode Island
Conservation District

Barrington • Bristol • Jamestown • Little Compton • Middletown • Newport • Portsmouth • Tiverton • Warren

SERVING
PROVIDENCE
COUNTY



Eastern Rhode Island Conservation District
— Serving Bristol & Newport Counties —

Barrington • Bristol • Jamestown • Little Compton • Middletown • Newport • Portsmouth • Tiverton • Warren



Southern Rhode Island Conservation District

The [Northern Rhode Island Conservation District \(NRICD\)](#) serves Providence County. The [Southern RI Conservation District \(SRICD\)](#) serves Kent and Washington Counties, and the [Eastern RI Conservation District \(ERICD\)](#) serves Newport and Bristol Counties.

The Newsletter of RI RC&D, The Rhode Island Resource & Development Area Council, Inc.

Disclaimer: Please Note

This newsletter's purpose is threefold. Our primary purpose is to keep our readers informed about opportunities and resources which may be available to our readership. Our second purpose is to keep our readership informed about news, events, products, opinions, and information which may directly affect our readership, either adversely or beneficially. Our third purpose is to present our readers with information that they may find enlightening or entertaining.

The opinions and political positions represented in the newsletter do not reflect the opinions or political positions of the Rhode Island Resource and Development Area Council, Inc.; nor does RI RC&D advocate or endorse any of the opinions, positions, or products mentioned in the newsletter *except where specifically stated*.

CONTACT RIFEP



Paul Dolan, RI RC&D Area Director
rircd2283@gmail.com

Jo-Anne Pacheco, Coordinator
WOW (Women Owning Woodlands) Project
Jo-Anne@rifarmenergy.org

Phone: 401-500-0399

RI RC&D Mailing Address:
2283 Hartford Avenue, Johnston, RI 02919

RI RC&D is an

