



# Rhode Island Resource Conservation & Development Area Council, Inc.

*Helping People Help the Land Since 1973*

Newsletter of June 2024

RI ENVIROTHON  
RESULTS  
See Page 4



## Summer Solstice 2024

Thursday, June 20 at 4:51 PM EDT



## In Person Workshop

# ECOSYSTEM GARDENING with Rhode Island Native Plants

— This program is presented in collaboration with —  
The North Scituate Public Library, 606 West Greenville Road, North Scituate, RI 02857

**Monday, June 24**

**6:30 to 7:30 pm**

**Presented by Karen Asher**

**Master Gardener and Native Plant Specialist**

The workshop includes a guided tour of the

### REGISTRATION

Registration for this workshop is through  
the North Scituate Public Library.

### TO REGISTER

Call 401-647-5133 or

Email [julie@scituatelibrary.org](mailto:julie@scituatelibrary.org)

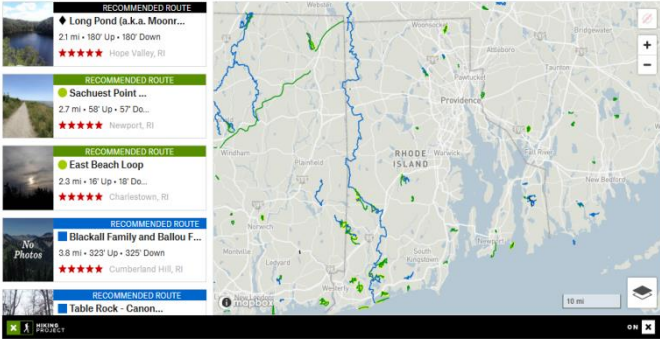
Space is limited. Register today!





AMERICAN HIKING SOCIETY'S  
**NATIONAL TRAILS DAY®**  
June 1, 2024

Any day is a  
good day for a  
hike!



[Rhode Island's Best Walks](#) from RIWalks

[Hiking Trails in Rhode Island](#) from TripAdvisor



**United  
Nations**

**World Environment Day  
5 June**

DOWNLOAD

**World Environment Day  
2024 PRACTICAL GUIDE**



**WORLD  
ENVIRONMENT  
DAY**

**NEWS AND  
STORIES**



A vertical collage of nine images showing the evolution of the United States flag. From top to bottom: 1. The modern 50-star flag. 2. A historical 48-star flag waving. 3. A 48-star flag flying from a building. 4. A 48-star flag waving. 5. A 48-star flag. 6. A historical black and white photo of soldiers with a flag. 7. A 48-star flag. 8. A 48-star flag. 9. An astronaut planting a flag on the moon.



**WORLD  
OCEANS  
DAY 2024**  
UNWORLDOCEANSDAY.ORG

**JUNE 8**

FLAG DAY  
JUNE 14

- Est. 1985

AMERICAN EAGLE FOUNDATION

Est. 1985

CONSERVE EDUCATE PROTECT

A row of five birds of prey against a black background. From left to right: a crow, a falcon, a bald eagle, an owl, and a falcon. The bald eagle is the largest and most prominent in the center. The owl is to its right, and two falcons are on the far left and far right. A small circular inset in the bottom left corner shows a close-up of a bald eagle's head.



# RHODE ISLAND Envirothon

Developing Environmentally Aware Leaders of Tomorrow

Rhode Island [Envirothon](#) is an exciting environmental program, perfect for middle and high school students who love the outdoors, animals, and plants, or who are just curious about the world we live in. Throughout the year, Envirothon students attend hands-on workshops that inspire learning about our natural environment, and instills in them an appreciation of nature and the delicate environmental balances that make life possible. After studying with experts on all aspects of the environment, the program culminates each May in a one-day—

## Results of the Battle of the Environmental Minds

HELD IN RI ON TUESDAY, MAY 21, 2024 —

**FIRST PLACE WINNER: WHEELER SCHOOL TEAM #1!**

Wheeler now has the opportunity to represent Rhode Island in the [International Envirothon Competition](#) to be held at Hobart and William Smith Colleges in Geneva, New York from July 28 to August 3, 2024.



## All results and [PHOTOS](#) from the 2024 Rhode Island Envirothon Competition:

First Place – The Wheeler School, Providence Team #1

Second Place – Coventry High School Team #1

Third Place – Narragansett High School Team #1

Top School results in each category were —

Aquatic Ecology – The Wheeler School Team #1

Forestry – The Wheeler School Team #1

Orals (Current Environmental Issue) – The Wheeler School Team #2

Soils and Land Use – Coventry High School Team #1

Wildlife – Narragansett High School Team #1

Written Test – St. Mary's Academy Bay View, East Providence Team #1

## Congratulations to all our Rhode Island Envirothon Teams!

Envirothon is not just an educational program. The environmental appreciation and team-building skills the students learn are real-world experiences that they will carry throughout their lives as they become the leaders of tomorrow because Envirothon is teaching them HOW to think, not WHAT to think.

## FOR MORE INFORMATION ABOUT ENVIROTHON CONTACT

VISIT THE RI  
ENVIROTHON  
[WEBSITE](#)

**Paul Dolan**  
**Call 401-500-0399**  
**Email [president@rienvirothon.org](mailto:president@rienvirothon.org)**

[WATCH THE  
ENVIROTHON  
VIDEO](#)



## SAVE THESE DATES!



### ZOOM WEBINAR

**“Stone by Stone, Wall by Wall: A History of New England Stone Walls and Suggestions for Conservation”**

with

**Robert Thorson, author of “Stone by Stone”**

**Monday, August 26**

**from 6:00 to 7:30 pm**

[Register Here](#)

Join us for a discussion with **Author Robert Thorson**, Professor of Earth Sciences at the University of Connecticut. His book *“Stone by Stone: The Magnificent History in New England’s Stone Walls”* suggests that once there were 250,000 miles of stone walls in America’s Northeast, stretching farther than the distance to the moon. Even though most of them are crumbling today, they contain a magnificent scientific and cultural story that Thorson believes are worth preserving.



#### [Why New England’s Stone Walls Are Unlike Any Others](#)

**By Robert M. Thorson, April 15, 2024**

Bigger than the Great Wall of China, Hadrian’s Wall, and the Pyramids of Giza combined, the region’s ubiquitous stone walls are also a unique ecological habitat. The abandoned fieldstone walls of New England are every bit as iconic to the region as lobster pots, town greens, sap buckets, and fall foliage... Stone walls can be found here and there in other states, but only in New England are they nearly ubiquitous... [READ MORE](#)



#### [How Stone Walls Became a Signature Landform of New England](#)

**By Robert M. Thorson, November 14, 2023**

This knee-high, tumbled-down, lichen-crusted stack of boulders, slabs and cobbles inspired one of America’s most enduring poems, Frost’s “Mending Wall.” When published in 1914, the poem immediately drew attention to the barriers that divide us from one another and to the unseen forces of nature that undo what we have done... These lines resonated so strongly with President John F. Kennedy in 1962 that he sent the aging poet to meet with Soviet Premier Nikita Khrushchev in Moscow to ameliorate Cold War tensions that would soon escalate into the Cuban missile crisis... [READ MORE](#)



**Walk Location:**  
**Powder Mill Ledges Wildlife Refuge**  
**12 Sanderson Road (Rt.5), Smithfield, RI 02917**

### **In Person: Tree ID Walk**

**Monday, September 23**

**from 5:00 to 6:00 pm**

**To REGISTER, please contact PAUL DOLAN**

Phone 401-500-0399 / e-Mail [rircd2283@gmail.com](mailto:rircd2283@gmail.com)



# RI RC&D NEWSLETTER OF JUNE 2024

## [IS THE WOOD-WIDE-WEB A FANTASY?](#)



## FROM WAR MACHINE TO SUPERMARKET STAPLE: [A HISTORY OF THE PLASTIC BAG](#)



## SOME OF THE LATEST POSTS FROM [ECO RI NEWS](#)

### [BICYCLE FRIENDLY COMMUNITY](#)



### [CAMP CRONIN](#)

### [NEW BOTTLE BILL](#)



### [FOSSIL FUEL POLLUTION](#)

### [REFORMING RI'S COSTAL AGENCY](#)



### [BURRILLVILLE](#)



### [360 YEAR OLD FOSSILIZED SPIDER](#)



### [THE FIRST WASTE-FREE CHOCOLATE?](#)





## TORNADOES 2024



## NEW IDEAS IN DESALINIZATION

A DASH OF HEAT NEEDED



PUFFER FISH + SUNLIGHT

WATER FROM THE SEA AIR



A FLOATING FARM PROTOTYPE





## Natural Resources Conservation Service

U.S. DEPARTMENT OF AGRICULTURE

### Funding Available to Help Rhode Island Farmers Replace Diesel Tractors and Other Farm Equipment with Low Emitting or Electric Equipment —

In 2024 alone, USDA is making more than \$3 billion available nationally through Biden's Inflation Reduction Act for climate-smart mitigation activities, in addition to the over \$2 billion available through the Farm Bill. This extensive funding will be used to meet demand for oversubscribed conservation programs, maximize climate benefits and to help farmers and forest landowners address their natural resource challenges.

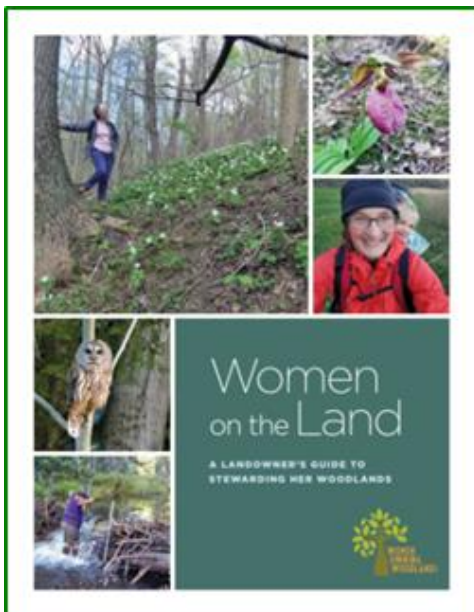
To learn more about NRCS programs, RI farmers and forest landowners can contact their local [USDA Service Center](#). Producers can also apply for NRCS programs, manage conservation plans and contracts, and view and print conservation maps by [logging into their farmers.gov account](#). If you don't have an account, [sign up today](#).



### Other USDA Programs

Producers and land managers are experiencing firsthand the impacts of climate change, which is caused by the build-up of greenhouse gases in the atmosphere. With support from NRCS, farmers, ranchers and forest landowners across the nation's working lands can contribute to climate solutions. [MORE INFO](#)

## Women on the Land: A Landowner's Guide to Stewarding Her Woodlands



*A woman's relationship with the natural world is often unique and meaningful, and for women who own land, this connection can be rewarding as well as challenging.*

*Women landowners engage with their woods in various ways, including enjoying the beauty of their property, caring for wildlife and nature, and appreciating the privacy that owning land offers. No two landowners are the same, just as no two properties are the same. The variations are limitless, from living far away to having your woodland behind your home, from actively engaging in stewardship for wildlife habitat to simply enjoying it as it is. You and your circumstances determine the decisions you make for your woodland.*

*This publication aims to help women landowners better understand their woodlands and make informed decisions to meet their goals.*

You can **download** a PDF of this guide [HERE](#).

Or, to get a printed copy of this useful guide, please contact Paul Dolan

by E-Mail: [rircd2283@gmail.com](mailto:rircd2283@gmail.com) or Phone: 401-500-0399





## Rhode Island Association of Conservation Districts

*Helping Rhode Island Conservation Districts Help Rhode Island*

conserving  
natural resources  
*for our future*

2283 Hartford Avenue  
Johnston, RI 02919  
401-934-0840

- [Northern Rhode Island Conservation District \(NRICD\)](#) serves Providence County
- [Southern RI Conservation District \(SRICD\)](#) serves Kent and Washington Counties
- [Eastern RI Conservation District \(ERICD\)](#) serves Newport and Bristol Counties



Natural Resources Conservation Service  
U.S. DEPARTMENT OF AGRICULTURE



The USDA-Natural Resource Conservation Service provides financial and technical assistance to address natural resource concerns through an array of conservation practices.

### Contact [Rhode Island NRCS](#)

The [Environmental Quality Incentives Program](#) (EQIP) provides financial and technical assistance to Rhode Island agricultural producers and non-industrial forest managers to address natural resource concerns in the Ocean State. This voluntary program helps farmers, ranchers and forest landowners integrate conservation into their working lands.

The **Rhode Island State Office in Warwick, RI** is the state headquarters for NRCS operations in the Ocean State. If you're a farmer or forestland owner looking for help, **please contact your local NRCS District Conservationist—**

- **Eastern RI District Conservationist Ghyllian Alger 401-255-6210**
- **Northern RI District Conservationist Kate Bousquet 401-255-6212**
- **Southern RI District Conservationist Jameson Long 401-793-0230**

**Rhode Island USDA Outreach & Public Affairs — Julie Wright: 401-786-3884**

## RHODE ISLAND DEPARTMENT OF ENVIRONMENTAL MANAGEMENT



The health and vitality of our lands, waters, and communities support our way of life and economy in Rhode Island. The Rhode Island Division of Agriculture and Forest Environment works to sustain, promote, and enhance Rhode Island's agricultural viability and preserve, manage, and promote healthy forests and community trees for today and for generations to come.

### RI DEM PROGRAMS INCLUDE

[ANIMAL HEALTH PROGRAM](#)  
[RI GROWN: EAT FRESH, BUY LOCAL](#)  
[PRODUCE SAFETY PROGRAM](#)  
[AGRICULTURE GRANT OPPORTUNITIES](#)

[LASA GRANT PROGRAM](#)  
[PESTICIDES PROGRAM](#)  
[URBAN FORESTRY PROGRAM](#)  
[FOREST HEALTH PROGRAM](#)

[WILD FIRE PROGRAM](#)  
[PEST ALERTS](#)  
[SPOTTED LANTERNFLY](#)  
[FOREST STEWARDSHIP](#)



## RHODE ISLAND RESOURCES FOR WOODLOT OWNERS



### **Rhode Island Forest Health Works Regional Conservation Partnership Program**

The RI Department of Environmental Management (RIDEM) Division of Forest Environment and ten partners will leverage over \$3.9M in 5 years under 2021 RCPP to permanently protect over 2,000 acres of critical, privately owned forest lands to combat fragmentation and improve wildlife habitat.

Funding is provided through a competitive process.

For more information about the next application cycle, please contact them.

[Ask.USDA.gov](https://ask.usda.gov) 1-833-ONE-USDA [askusda@usda.gov](mailto:askusda@usda.gov)

## Rhode Island Forest Conservators Organization

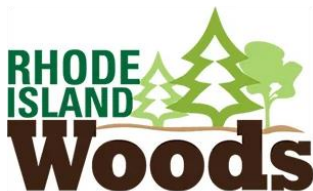
*Helping to Safeguard Rhode Island's Woodlands*



Rhode Island Forest Conservators Organization (RIFCO) is a non-profit organization dedicated to the protection and wise use of Rhode Island's woodland resources.

Sign up to get the [RIFCO](#) monthly e-newsletter  
"[The Forest Conservationist](#)"

OR [Join RIFCO](#) and automatically receive the newsletter.



## Your Online Resource for RI Forest Information

Still more than half forested, Rhode Island has extensive and varied woodlands surrounding Narragansett Bay that contribute to the state's economy, environmental benefits, and quality of life.

The website is hosted and maintained by the University of Rhode Island, Department of Natural Resources Science, with the assistance of an advisory committee. This site provides information for landowners, businesses, and outdoor enthusiasts on forest stewardship, wildlife, science and policy, legacy planning, RI woods-related products, learning opportunities, and more. It also features information about Rhode Island forestry, including forest-related businesses, upcoming events and workshops, tree identification, new forestry technologies, and other educational tools. Throughout each section of the website you will find links to fact sheets and other organizations where you can learn more. [RI Woods](#) aims to be a hub of information for all experience levels and an avenue to resources that promote good stewardship and forest health.



[Rhode Island Tree Council](#)'s mission is to create healthy urban and community forests, which underpin the state's verdant ecological tapestry, support its vibrant economy, and enrich the lives of all Rhode Islanders.

RI Tree helps improve Rhode Island's tree resources, build healthy and vibrant urban forests, and educates citizens about urban forestry. The group offers a wide variety of programs and resources designed to educate woodland owners on the benefits and value of trees. [WATCH Video](#)



## RHODE ISLAND RESOURCES FOR WOODLOT OWNERS



The mission of the Center for Mediation is: To provide individuals, organizations, and businesses with constructive skills and processes to effectively resolve their differences.

[The Center for Mediation](#) is the provider for Rhode Island's Agricultural Mediation Program (RIAMP). This is the official USDA-certified program for our state.

This program offers confidential assistance to help resolve agricultural-related issues in a productive environment. For more than a decade, RIAMP has provided essential mediation services for agricultural loans, farm program compliance, and other agriculture-related issues to farmers and growers throughout Rhode Island.

Call 401-273-9999 from 9am to 4pm Mon-Fri or visit our [website](#)

## OTHER RESOURCES FOR WOODLOT OWNERS



The American Tree Farm Program

*We grow stewardship from the roots.*

### [Rhode Island Tree Farm Program](#)

The American Tree Farm System is a program for woodland owners who are committed to sustainably managing their woods for wood, water, wildlife and recreation. Each state program is run by a diverse group of partners, such as state agencies, non-profit organizations, volunteers, foresters and landowners.

To learn more, please contact **Marc Tremblay**,  
Phone: 401-568-3410 or Email: [mstremb@cox.net](mailto:mstremb@cox.net)



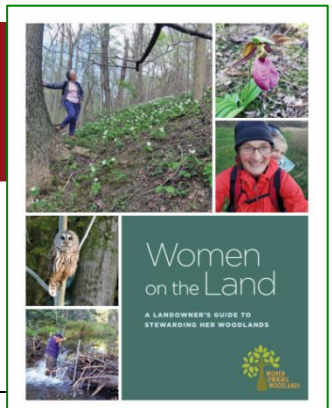
### [American Forest Foundation Newsletter](#)

Sign up and receive updates from the **AFF** and/or its signature programs: the [American Tree Farm System](#) (ATFS) and [My Land Plan](#)

*Unlocking the power of America's Family Forests to fight climate change.*

## UMassAmherst

[Women on the Land](#) intends to build a network of female landowners and stewards in Massachusetts and provide opportunities for education and connection. We host events throughout the year and encourage women to foster relationships with each other and their land.





# The Newsletter of RI RC&D

## The Rhode Island Resource & Development Area Council, Inc.

### Disclaimer: Please Note

This newsletter's purpose is threefold. Our primary purpose is to keep our readers informed about opportunities and resources which may be available to our readership. Our second purpose is to keep our readership informed about news, events, products, opinions, and information which may directly affect our readership, either adversely or beneficially. Our third purpose is to present our readers with information that they may find enlightening or entertaining.

The opinions and political positions represented in the newsletter do not reflect the opinions or political positions of the Rhode Island Resource and Development Area Council, Inc.; nor does RI RC&D advocate or endorse any of the opinions, positions, or products mentioned in the newsletter *except where specifically stated*.

### CONTACT RI RC&D

#### Rhode Island Resource Conservation & Development Area Council, Inc.



**Paul Dolan, RI RC&D Area Director**  
[rircd2283@gmail.com](mailto:rircd2283@gmail.com)

**Jo-Anne Pacheco, Coordinator**  
*WOW (Women Owning Woodlands) Project*  
[Jo-Anne@rifarmenergy.org](mailto:Jo-Anne@rifarmenergy.org)

[RIRCD.ORG](http://RIRCD.ORG) Phone: 401-500-0399



**RI RC&D Mailing Address:**  
2283 Hartford Avenue  
Johnston, RI 02919



**Rhode Island Association  
of Conservation Districts**

*Helping Rhode Island Conservation Districts Help Rhode Island*

**conserving  
natural resources**  
*for our future*

2283 Hartford Avenue  
Johnston, RI 02919  
401-934-0840

[Northern Rhode Island Conservation District \(NRICD\)](#) serves Providence County  
[Southern Rhode Island Conservation District \(SRICD\)](#) serves Kent and Washington Counties  
[Eastern Rhode Island Conservation District \(ERICD\)](#) serves Newport and Bristol Counties