



# Rhode Island Resource Conservation & Development Area Council, Inc.

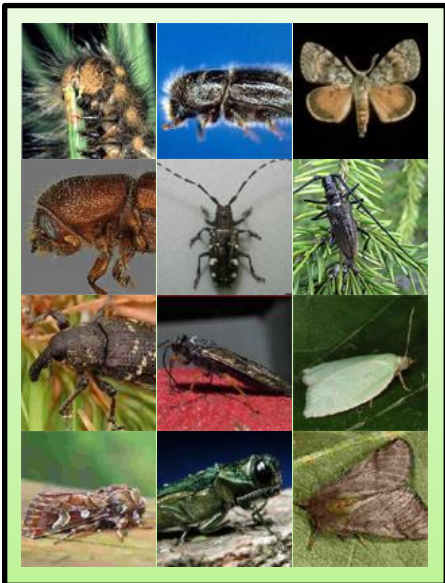
*Helping People Help the Land Since 1973*

## Newsletter of May 2025

### ZOOM WORKSHOP

### MONDAY, MAY 12 FROM 6:30 - 7:30 PM

### “Forest Pests and Diseases Affecting Rhode Island’s Landscape”



#### RI DEM co-presenters

**Alana Russell and Cynthia Kwolek**

Alana is [Forest Health Program Coordinator](#)  
Division of Agriculture and Forestry

Cynthia is Senior Environmental Scientist with  
the [Cooperative Agricultural Pest Survey](#) (CAPS)



The mission of the Forest Health Program is to protect the health, vigor, and resiliency of our rural and urban forests. Staff survey and monitor our forests for: circumstances that may pose a risk to forest health, such as insects or diseases, and evidence of harm from abiotic factors such as pollution, fire, drought, ice storms, or damaging winds.

While some threats to our forest are native to the region, there is an increase in serious threats arising from non-native and invasive pests, diseases, and plants. Because our forests did not evolve with these threats, the trees typically have limited or no natural defense mechanisms that enable them to withstand attack, or competition.

**To Register** contact **Paul Dolan**, RI RC&D Director  
401-500-0399 or email [rircd2283@gmail.com](mailto:rircd2283@gmail.com)



## RHODE ISLAND Envirothon

Developing Environmentally Aware Leaders of

VISIT THE RI  
ENVIROTHON  
[WEBSITE](#)

WATCH THE  
ENVIROTHON  
[VIDEO](#)

### Rhode Island State Competition

**May 23, 2025**

Kent County YMCA

**RHODE ISLAND SCHOOL WINNERS WILL  
COMPETE IN CALGARY, ALBERTA CANADA!  
STAY TUNED FOR THE RESULTS!**

FOR MORE INFORMATION ABOUT ENVIROTHON  
PLEASE CONTACT

**Paul Dolan, President**

Call 401-500-0399

Email [mailto:president@rienvirothon.org](mailto:mailto:president@rienvirothon.org)



**2025 NCF-Envirothon  
Alberta**

Calgary, Alberta, Canada  
Mount Royal University  
Dates: July 20 - 26, 2025  
Hosted by Alberta Envirothon Association

**2025 Current Issue Topic**  
Roots and Resiliency: Fostering Forest Stewardship in a Canopy of Change

# ∞ SUMMER WALKS 2025 ∞

WITH **Christopher Riely**

Forester and Conservationist, Sweet Birch Consulting



## Plants, Trees, & Shrubs, an ID Walk

Wednesday, June 25 from 5:30 to 6:30 pm  
Cumberland Monastery

## Plant ID walk

Wednesday, July 30 from 5:30 to 6:30 pm  
Steere Hill Heritage Park, Phillips Farm  
Glocester Land Trust



### TO REGISTER CONTACT

Paul Dolan, RI RC&D Director

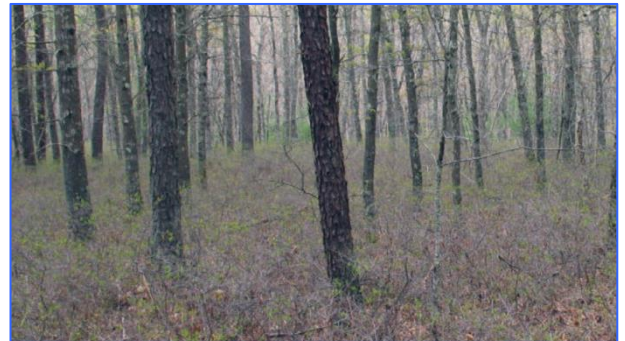
Phone 401-500-0399 or email [rircd2283@gmail.com](mailto:rircd2283@gmail.com)



## PROVIDENCE — Latest News



[Tomaquag Museum's Lorén Spears  
Inducted into R.I. Heritage Hall of Fame](#)



[Forensics in the Forest: Southern  
Rhode Island's Glacial Legacy](#)



[Avian Flu Cases Down in Rhode Island  
But Concerns Linger](#)



[Raptors Back in Humankind's  
Poisonous Crosshairs](#)



### [Ghost Forests Are Growing as Sea Levels Rise](#)

Like giant bones planted in the earth, clusters of tree trunks, stripped clean of bark, are appearing along the Chesapeake Bay on the United States' mid-Atlantic coast. They are ghost forests: the haunting remains of what were once stands of cedar and pine. Since the late 19th century, an ever-widening swath of these trees have died along the shore. And they won't be growing back...

[READ MORE](#)



### [Climate Change is Driving a Rise in Dengue in the US](#)

Last week, the Centers for Disease Control and Prevention, or CDC, issued an urgent alert about dengue fever, a painful and sometimes deadly mosquito-borne illness common in tropical and subtropical parts of the world. Some 3,500 travelers from the United States contracted dengue abroad in 2024, according to the CDC, an 84 percent increase over 2023. "This trend is expected to continue," the agency said, noting that Florida, California, and New York, in that order, are likely to see the biggest surges this year...

[READ MORE](#)



### [Meadowscaping](#)

Lawns cover almost a quarter of urban land in the US. But these flat green monocultures aren't much good to wildlife, offering pollinators little sustenance. One couple chose instead to "meadowscape" their lawn when they moved into a new home in Pennsylvania. As well as being a haven for native bees and butterflies, a seeded meadow is around seven times less expensive to maintain than a standard lawn...

[READ MORE](#)



### [Trees Demonstrate an Unexpected Superpower](#)

Trees are a key component of a healthy planet. In fact, our trees are much more useful and powerful than we've given them credit for. Through photosynthesis, trees take in atmospheric carbon dioxide and release the oxygen we need to breathe. Earth's forests hold an estimated 861 gigatons of carbon, which is about equivalent to 100 years of anthropogenic fossil fuel emissions... If all that wasn't enough, new research offers another reason why forests may be critical to keeping climate change in check...

[READ MORE](#)

## POPULAR SCIENCE



### [Protecting Birds— and Motorists](#)

The NY State Bridge Authority operates and maintains five bridges along the Mid-Hudson River Valley, typically tries to encourage birds to nest on the lower spans, closer to the river and away from cars. But in true New Yorker fashion, the ospreys appear to be seeking out the penthouse with spectacular views. While the nesting birds are a good indicator of the ecological recovery of the Hudson, the nests can pose some risks to the approximately 20,000 vehicles per day that cross the Bear Mountain Bridge. The nests are about 250 feet above the roadway, so if a stick, branch, or even a fish falls out of it, cars and people below are at risk... So they came up with a solution...

[READ MORE](#)

[America's Ambitious Plan to Restore the Wild West](#)



[ReWilding Power Lines](#)



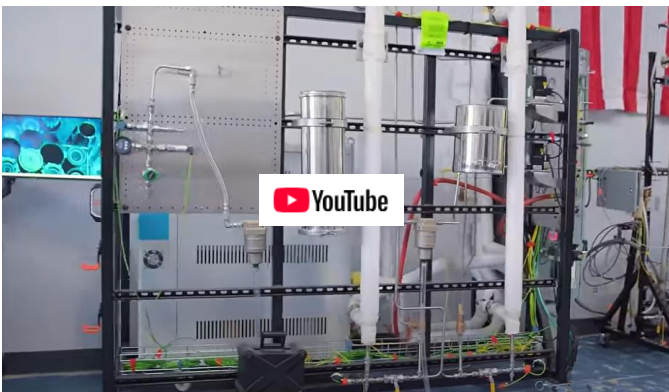
[15 Medieval Fruits that Need to Come Back](#)



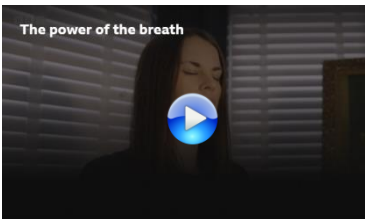
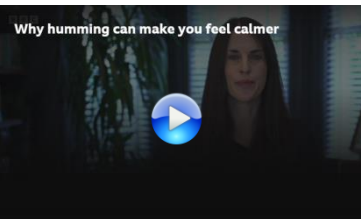
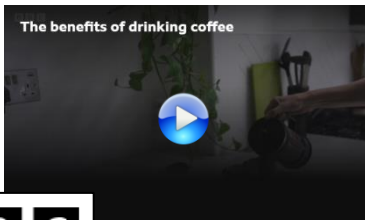
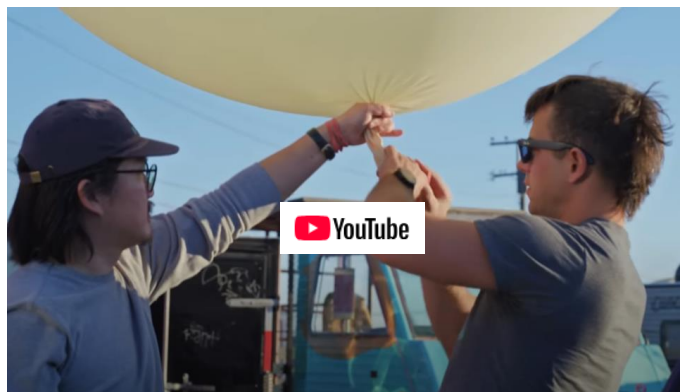
[20 Fruits Your Grandparents Loved](#)



[The Last Fuel We'll Ever Need?](#)



[Making a Thermostat for the Planet](#)



[A Clever New Idea](#)

Solar panels don't generate electricity when it is raining. But that doesn't mean you have to give up on renewable electricity. Researchers have now found a way to generate clean power from rain drops.... [READ MORE](#)

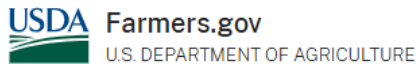


# Natural Resources Conservation Service

U.S. DEPARTMENT OF AGRICULTURE

In 2025, the Natural Resources Conservation Service (NRCS) in Rhode Island will provide more funding than ever before to help farmers and forest managers adopt conservation practices. This includes funding for climate-smart practices, water quality initiatives, and a faster application process.

To learn more about NRCS programs, RI farmers and forest landowners can contact their local [USDA Service Center](#). Producers can also apply for NRCS programs, manage conservation plans and contracts, and view and print conservation maps by [logging into their farmers.gov account](#). If you don't have an account, [sign up today](#).



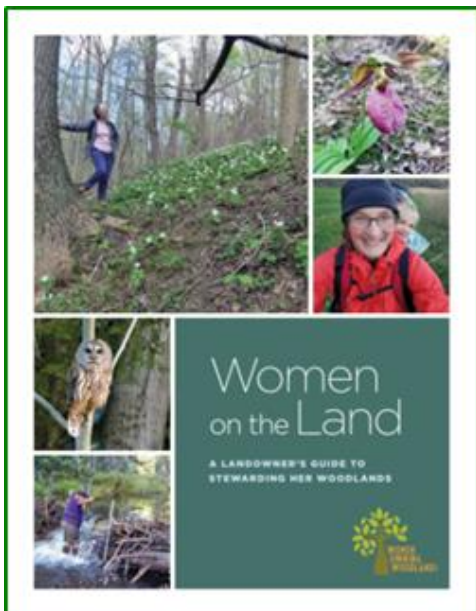
Producers and land managers are experiencing firsthand the impacts of climate change, which is caused by the build-up of greenhouse gases in the atmosphere. With support from NRCS, farmers, ranchers and forest landowners across the nation's working lands can contribute to climate solutions. [MORE INFO](#)

**2025 Inflation Reduction Act (IRA) funding:** Up to \$5.7 billion for [Climate-Smart](#) practices will help farmers and forest landowners improve their operations' resiliency and productivity. Water quality initiatives will help address water quality concerns in the Sakonnet River and Tomaquag Brook-Pawcatuck River watersheds.

The **Environmental Quality Incentives Program (EQIP)** provides financial and technical assistance to Rhode Island farmers, forest landowners, oyster growers, ranchers, and urban growers to address natural resource concerns in the Ocean State.

For more information: Call NRCS Field Office: (401) 822-8848 or your local Conservation District Office to apply.

## Women on the Land: A Landowner's Guide to Stewarding Her Woodlands



*A woman's relationship with the natural world is often unique and meaningful, and for women who own land, this connection can be rewarding as well as challenging.*

*Women landowners engage with their woods in various ways, including enjoying the beauty of their property, caring for wildlife and nature, and appreciating the privacy that owning land offers. No two landowners are the same, just as no two properties are the same. The variations are limitless, from living far away to having your woodland behind your home, from actively engaging in stewardship for wildlife habitat to simply enjoying it as it is. You and your circumstances determine the decisions you make for your woodland.*

*This publication aims to help women landowners better understand their woodlands and make informed decisions to meet their goals.*

You can **download** a PDF of this guide [HERE](#).

Or, to get a printed copy of this useful guide, please contact Paul Dolan

E-Mail: [rircd2283@gmail.com](mailto:rircd2283@gmail.com) or Phone: 401-500-0399



**Rhode Island Association  
of Conservation Districts**  
*Helping Rhode Island Conservation Districts Help Rhode Island*

**conserving  
natural resources**  
*for our future*  
2283 Hartford Avenue  
Johnston, RI 02919  
401-934-0840

- [Northern Rhode Island Conservation District \(NRICD\)](#) serves Providence County
- [Southern RI Conservation District \(SRICD\)](#) serves Kent and Washington Counties
- [Eastern RI Conservation District \(ERICD\)](#) serves Newport and Bristol Counties



The USDA-Natural Resource Conservation Service provides financial and technical assistance to address natural resource concerns through an array of conservation practices.

**Contact [Rhode Island NRCS](#)**

The [Environmental Quality Incentives Program](#) (EQIP) provides financial and technical assistance to Rhode Island agricultural producers and non-industrial forest managers to address natural resource concerns in the Ocean State. This voluntary program helps farmers, ranchers and forest landowners integrate conservation into their working lands.

The **Rhode Island State Office in Warwick, RI** is the state headquarters for NRCS operations in the Ocean State. If you're a farmer or forestland owner looking for help, **please contact your local NRCS District Conservationist—**

- **Eastern RI District Conservationist Ghyllian Alger 401-255-6210**
- **Northern RI District Conservationist Kate Bousquet 401-255-6212**
- **Southern RI District Conservationist Jameson Long 401-793-0230**

**Rhode Island USDA Outreach & Public Affairs — Julie Wright: 401-786-3884**

**RHODE ISLAND DEPARTMENT OF ENVIRONMENTAL MANAGEMENT**



The health and vitality of our lands, waters, and communities support our way of life and economy in Rhode Island. The Rhode Island Division of Agriculture and Forest Environment works to sustain, promote, and enhance Rhode Island's agricultural viability and preserve, manage, and promote healthy forests and community trees for today and for generations to come.

**RI DEM PROGRAMS INCLUDE**

[ANIMAL HEALTH PROGRAM](#)  
[RI GROWN: EAT FRESH, BUY LOCAL](#)  
[PRODUCE SAFETY PROGRAM](#)  
[AGRICULTURE GRANT OPPORTUNITIES](#)

[LASA GRANT PROGRAM](#)  
[PESTICIDES PROGRAM](#)  
[URBAN FORESTRY PROGRAM](#)  
[FOREST HEALTH PROGRAM](#)

[WILD FIRE PROGRAM](#)  
[PEST ALERTS](#)  
[SPOTTED LANTERNFLY](#)  
[FOREST STEWARDSHIP](#)

## RHODE ISLAND RESOURCES FOR WOODLOT OWNERS



### Rhode Island Forest Health Works Regional Conservation Partnership Program

The RI Department of Environmental Management (RIDEM) Division of Forest Environment and ten partners will leverage over \$3.9M in 5 years under 2021 RCPP to permanently protect over 2,000 acres of critical, privately owned forest lands to combat fragmentation and improve wildlife habitat.

Funding is provided through a competitive process.

For more information about the next application cycle, please contact them.

[Ask.USDA.gov](https://ask.usda.gov) 1-833-ONE-USDA [askusda@usda.gov](mailto:askusda@usda.gov)

## Rhode Island Forest Conservators Organization

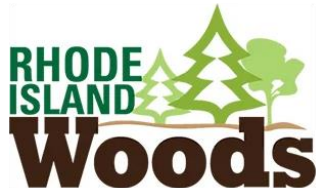
*Helping to Safeguard Rhode Island's Woodlands*



Rhode Island Forest Conservators Organization (RIFCO) is a non-profit organization dedicated to the protection and wise use of Rhode Island's woodland resources.

Sign up to get the [RIFCO](#) monthly e-newsletter  
"[The Forest Conservationist](#)"

OR [Join RIFCO](#) and automatically receive the newsletter.



## Your Online Resource for RI Forest Information

Still more than half forested, Rhode Island has extensive and varied woodlands surrounding Narragansett Bay that contribute to the state's economy, environmental benefits, and quality of life.

The website is hosted and maintained by the University of Rhode Island, Department of Natural Resources Science, with the assistance of an advisory committee. This site provides information for landowners, businesses, and outdoor enthusiasts on forest stewardship, wildlife, science and policy, legacy planning, RI woods-related products, learning opportunities, and more. It also features information about Rhode Island forestry, including forest-related businesses, upcoming events and workshops, tree identification, new forestry technologies, and other educational tools. Throughout each section of the website you will find links to fact sheets and other organizations where you can learn more. [RI Woods](#) aims to be a hub of information for all experience levels and an avenue to resources that promote good stewardship and forest health.



[Rhode Island Tree Council](#)'s mission is to create healthy urban and community forests, which underpin the state's verdant ecological tapestry, support its vibrant economy, and enrich the lives of all Rhode Islanders.

RI Tree helps improve Rhode Island's tree resources, build healthy and vibrant urban forests, and educates citizens about urban forestry. The group offers a wide variety of programs and resources designed to educate woodland owners on the benefits and value of trees. [WATCH Video](#)

BENEFITS OF URBAN TREES



# RHODE ISLAND RESOURCES FOR WOODLOT OWNERS



The mission of the Center for Mediation is: To provide individuals, organizations, and businesses with constructive skills and processes to effectively resolve their differences.

[The Center for Mediation](#) is the provider for Rhode Island's Agricultural Mediation Program (RIAMP). This is the official USDA-certified program for our state.

This program offers confidential assistance to help resolve agricultural-related issues in a productive environment. For more than a decade, RIAMP has provided essential mediation services for agricultural loans, farm program compliance, and other agriculture-related issues to farmers and growers throughout Rhode Island.

Call 401-273-9999 from 9am to 4pm Mon-Fri or visit our [website](#)

## OTHER RESOURCES FOR WOODLOT OWNERS

The American Tree Farm Program



*We grow stewardship from the roots.*

### [Rhode Island Tree Farm Program](#)

The American Tree Farm System is a program for woodland owners who are committed to sustainably managing their woods for wood, water, wildlife and recreation. Each state program is run by a diverse group of partners, such as state agencies, non-profit organizations, volunteers, foresters and landowners.

To learn more, please contact **Marc Tremblay**,  
Phone: 401-568-3410 or Email: [mstremb@cox.net](mailto:mstremb@cox.net)



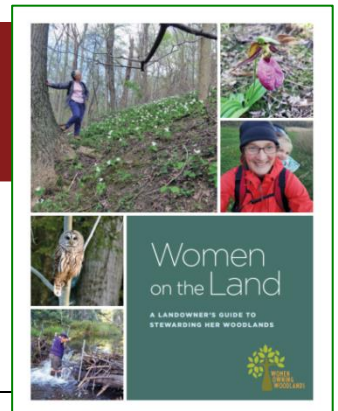
### [American Forest Foundation Newsletter](#)

Sign up and receive updates from the **AFF** and/or its signature programs: the [American Tree Farm System](#) (ATFS) and [My Land Plan](#)

*Unlocking the power of America's Family Forests to fight climate change.*

## UMassAmherst

[Women on the Land](#) intends to build a network of female landowners and stewards in Massachusetts and provide opportunities for education and connection. We host events throughout the year and encourage women to foster relationships with each other and their land.





---

# The Newsletter of RI RC&D

## The Rhode Island Resource & Development Area Council, Inc.

### Disclaimer: Please Note

This newsletter's purpose is threefold. Our primary purpose is to keep our readers informed about opportunities and resources which may be available to our readership. Our second purpose is to keep our readership informed about news, events, products, opinions, and information which may directly affect our readership, either adversely or beneficially. Our third purpose is to present our readers with information that they may find enlightening or entertaining.

The opinions and political positions represented in the newsletter do not reflect the opinions or political positions of the Rhode Island Resource and Development Area Council, Inc.; nor does RI RC&D advocate or endorse any of the opinions, positions, or products mentioned in the newsletter *except where specifically stated*.

### CONTACT RI RC&D

#### Rhode Island Resource Conservation & Development Area Council, Inc.



Website: <http://rircd.org>



**Paul Dolan, RI RC&D Area Director**  
[rircd2283@gmail.com](mailto:rircd2283@gmail.com)

**Jo-Anne Pacheco, Coordinator**  
*WOW (Women Owning Woodlands) Project*  
[Jo-Anne@rircd.org](mailto:Jo-Anne@rircd.org)

**Phone: 401-500-0399**

**RI RC&D Mailing Address:**  
2283 Hartford Avenue  
Johnston, RI 02919



**Rhode Island Association  
of Conservation Districts**  
*Helping Rhode Island Conservation Districts Help Rhode Island*

**conserving  
natural resources**  
*for our future*

2283 Hartford Avenue  
Johnston, RI 02919  
401-934-0840

[Northern Rhode Island Conservation District \(NRICD\)](#) serves Providence County  
[Southern Rhode Island Conservation District \(SRICD\)](#) serves Kent and Washington Counties  
[Eastern Rhode Island Conservation District \(ERICD\)](#) serves Newport and Bristol Counties

**Rhode Island USDA Outreach & Public Affairs — Julie Wright: 401-786-3884**