



# Rhode Island Resource Conservation & Development Area Council, Inc.

*Helping People Help the Land Since 1973*

## Newsletter of December 2025

You are cordially invited to the RI RC&D

### *Online Christmas Party!*

Save the Date!

Wednesday

**3 December 2025**

6:00 to 7:00 pm **Online**

The Annual RI RC&D

**Holiday Get-Together**

To Get Your Invitation

Contact Paul Dolan

E-Mail

[rircd2283@gmail.com](mailto:rircd2283@gmail.com)

Phone

**401-500-0399**

*See you there!*

Please plan to join us for our  
**Annual Get-Together.**

Make yourself comfortable.

Visit with friends.

Tell us how we did this year.

Let us know how we can help  
*you* in the year to come!

Get a preview of what we  
have in store for 2026!

Enjoy a slide show review of  
2025's workshops.

**And — if you dare! — take the  
Self Scoring Workshop Quiz!**

***YOU could WIN A FABULOUS PRIZE!***

***Please plan to join us online!***

### Coming to in December

**Pascoag Public Library**, Pascoag, RI

**Thursday, 4 December** from 6:00 - 7:30 pm

***Insects and Diseases of RI Trees—***

***Who are the current “bad guys” affecting our trees?***

This is a Power Point hosted in person by RI RC&D  
personnel who can answer your questions.

**North Scituate Library**, N. Scituate, RI

**Friday, 5 December** from 1:00 - 2:30 pm

***Forest Resiliency in a Time of Change***

A 90-Minute *In-Person* Talk by RI Foresters

Paul Dolan and Christopher Modisette

Please call the N. Scituate Library

at (401) 647-5133 to reserve your place.

### Winter Solstice 2025



Sunday, 21 December at 10:03 a.m. EST (15:03 p.m. GMT)

# Rhode Island Forests and People: Partners through Time

Southern New England is one of the world's great meeting places of forests and people. Here in Rhode Island, the woods are more than just scenery— they've been a source of food, fuel, inspiration, and community for countless generations. From the first caretakers of this land to today's neighborhoods and cities, forests have always shaped how we live, work, and connect with one another.

## Scheduled Presentations

### Hope Library

(401) 821-7910  
374 North Road,  
Hope, RI 02831

- *Common Forest Insects, Diseases and Invasive Plants*  
Saturday **January 10, 2026**,  
12 Noon – 1:30 pm
- *Challenges and Opportunities for our Forests*  
Saturday **March 21, 2026**,  
12 Noon – 1:30 pm

### North Scituate Library

(401) 647-5133  
606 West Greenville Road,  
N. Scituate, RI 02857

- *Forest Resiliency in a Time of Change*  
Friday **December 5, 2025**,  
1:00 – 2:30 pm
- *Forestry Concepts Used in the Care of Our Forest Systems*  
Friday **February 6, 2026**,  
1:00 – 2:30 pm

This series invites you to explore that story. Together we'll look at how forests and people have grown side by side, how they've faced challenges, and how our choices today will determine the future of these remarkable landscapes.

Come join us for a journey through time, discovering the past, reflecting on the present, and imagining the role our forests can play in a healthy, thriving Rhode Island for generations to come.

These 90-minute talks will be presented  
monthly **through March 2026**  
by Rhode Island Foresters

**Paul Dolan and Christopher Modisette,**

Please **REGISTER** with the hosting library:

**N. Scituate**



**Hope Library**



For more information about this series, please contact

**Paul Dolan, Director RI RC&D**

**Phone: 401-500-0399**

**Email: [rircd2283@gmail.com](mailto:rircd2283@gmail.com)**



A project of Rhode Island Resource Conservation & Development Area Council, Inc., supported by, and in collaboration with, the USDA Natural Resource Conservation Service. **Equal opportunity employers.**

Check out  
our new  
website!



**Natural Resources Conservation Service**  
U.S. DEPARTMENT OF AGRICULTURE

**Rhode Island**



## Sign up for USDA Conservation Programs in Rhode Island

**Are you a Rhode Island Farmer or Woodland Owner?**

**Do you want to—**

- *Improve your Farm or Forest Health?*
  - *Have Cleaner Air and Water?*
  - *Conserve your Soil & Water?*
- *Improve Wildlife Habitat on your Land?*
- *Improve your Animal Waste Management?*
- *Conserve your land through a Conservation Easement?*



NRCS encourages Rhode Island farmers, livestock producers, woodland owners, small-scale growers, and oyster growers to call or visit us to see how we can help you enhance your Ag operation through conservation practices.

Conservation practices and activities can provide you with significant benefits: improved forest and soil health, water quality, air quality, pollinator and wildlife habitat; wildfire mitigation; and improved energy and irrigation efficiency.

We offer a variety of practices and activities like cover crops, high tunnels, tree planting, composting facilities, pasture and hay planting, oyster reef restoration, wildlife habitat planting, animal waste management, efficient irrigation systems, wetland restoration, and farmland conservation through our [Environmental Quality Incentives Program](#) (EQIP), [Conservation Stewardship Program](#) (CSP), [Agricultural Management Assistance \(AMA\) Program](#), [Agricultural Conservation Easement Program](#) (ACEP), and [Regional Conservation Partnership Program](#) (RCPP).

Visit [www.RI.nrcs.usda.gov](http://www.RI.nrcs.usda.gov)

**Rhode Island State Office:**

401-828-1300, [ri-nrcs-publicinfo@usda.gov](mailto:ri-nrcs-publicinfo@usda.gov)

Eastern Rhode Island – *Serving Bristol & Newport counties*

NRCS Field Office: 401-786-1389

Conservation District Office: 401-934-0842

Northern Rhode Island – *Serving Providence county*

NRCS Field Office: 401-822-8835

Conservation District Office: 401-934-0840

Southern Rhode Island – *Serving Kent & Washington counties*

NRCS Field Office: 401-822-8837

Conservation District Office: 401-661-5761

MEETING

**The Conservation Programs That Can Transform Your Farm or Forest**

In-Person & Virtual Information Session

Are you a farmer, landowner, land steward, forest landowner, or wildlife habitat manager?

Learn how NRCS programs and federal conservation funds work, what you qualify for, and how to secure them.

**Event Details:**

9 December 2025

5:00 - 6:30 PM

Rogers Free Library, Bristol, RI

**ERICD - The Conservation Programs that Can Transform your Farm or Forest**

December 9, 2025

Funding is provided through a competitive process. NRCS accepts applications for conservation programs year-round but sets state-specific ranking dates to evaluate applications for funding. Application cutoff periods allow NRCS to screen and rank applications for those with the highest conservation benefits across Rhode Island's landscapes, including cropland, pastureland, and private non-industrial forestlands.

USDA is an equal opportunity provider, employer, and lender.



## [RI DEM Forest Stewardship Program](#)

The Rhode Island Forest Stewardship Program (FSP), in cooperation with the USDA Forest Service, supports private forest landowners' efforts to manage, enjoy, and care for their land long-term. This program is designed to both recognize the public benefits of privately-owned working lands and good land management, and to help private landowners protect the ecosystem benefits and value of their forest.

The FSP provides information and resources on forest planning, information and education about forest issues, and supports forest landowner access to Rhode Island's current use tax program for their forest land, The Farm, Forest, and Open Space Act (FFOS)... [Find Out More About this Program](#)



ecoRI  
news

## PROVIDENCE — [Latest News](#)

### Whitehouse Sole U.S. Representative at Brazil Climate Conference:

It's not every day a Rhode Island politician can claim to be the only representative of the U.S. federal government....For the opening weekend of this year's 30th U.N. Conference of the Parties (COP) — the largest and most important venue for world governments to gather to address the global climate crisis — Sen. Sheldon Whitehouse, D-R.I., was one of the few representatives from the U.S. government... [READ MORE](#)

### Rhode Island News:

[Ridership Dips, Complaints Rise](#)

[Glocester PFA Contamination](#)

[N.E. \\$450M Heatpump Plan](#)

[Arctic Seal Mothers](#)



## Coming in 2026

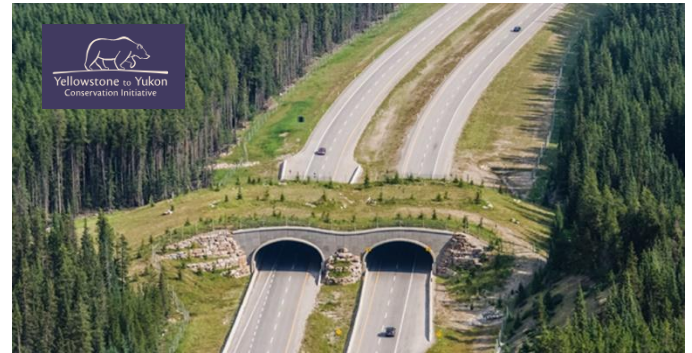


**Thursday, February 19, 2026 from 6 to 7 PM**  
TO REGISTER FOR THIS ZOOM WEBINAR PLEASE CONTACT PAUL DOLAN  
E-Mail: [rircd2283@gmail.com](mailto:rircd2283@gmail.com) Phone: 401-500-0399

## THE HIDDEN ENGINEERING OF WILDLIFE CROSSINGS

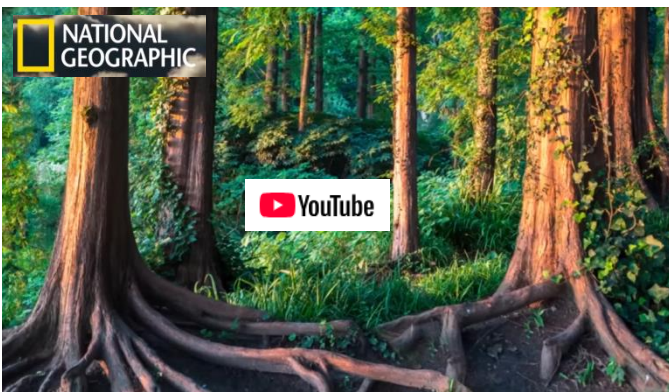


## ARTICLE: HOW DO WILDLIFE KNOW TO USE ANIMAL BRIDGES AND CROSSINGS?



## Secrets of the Forests

### HOW TREES SECRETLY TALK TO EACHOTHER



### FUNGI: HOW TREES TALK TO EACHOTHER



### THE HIDDEN LANGUAGE OF TREES



### DOUG TALLAMY: THE NATURE OF OAKS



### DOUG TALLAMAY: TALKS AT GOOGLE



### DOUG TALLAMAY: A YOUTUBE PLAYLIST





### Corvid Cleaning

Imagine this: wild crows walking through city streets, picking up cigarette butts— not for hunger, but for treats. A Swedish startup, Corvid Cleaning, has turned that idea into reality. In the city of Södertälje just outside Stockholm, machines sit in public squares. A crow drops a cigarette butt into a slot, a food reward pops out— and the city's litter problem looks a little less hopeless... Cigarette filters are everywhere— they make up over 60 % of the litter in some Swedish assessments. The cost of cleaning them up is enormous, but. Corvid Cleaning's pilot believes crows can cut those costs. *Additional: Read an article in [The Guardian](#)*

### WHAT MEDIEVAL BUILDERS KNEW ABOUT HEATING

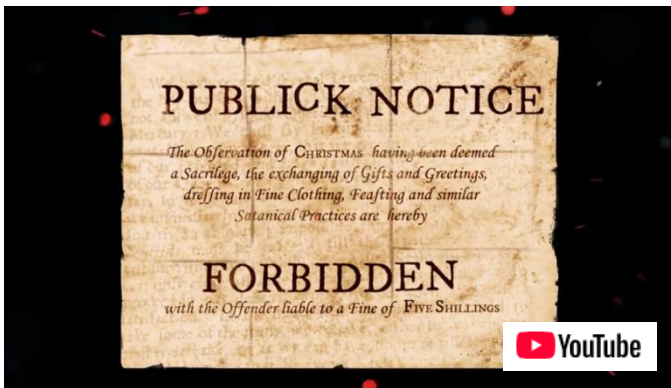


### HOW IZBA CABINS KEPT RUSSIAN FAMILIES ALIVE



## 'Tis the Season...

### WHEN CHRISTMAS WAS BANNED IN THE COLONIES



### WHAT THE HECK IS FIGGY PUDDING?



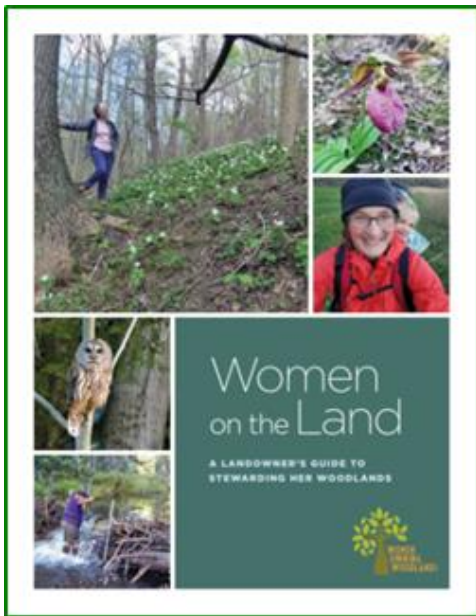
### DECEMBER 5TH: BEWARE KRAMPUS!



### WHY DO WE KISS UNDER THE MISTLETOE?



## Women on the Land: A Landowner's Guide to Stewarding Her Woodlands



*A woman's relationship with the natural world is often unique and meaningful, and for women who own land, this connection can be rewarding as well as challenging.*

*Women landowners engage with their woods in various ways, including enjoying the beauty of their property, caring for wildlife and nature, and appreciating the privacy that owning land offers. No two landowners are the same, just as no two properties are the same. The variations are limitless, from living far away to having your woodland behind your home, from actively engaging in stewardship for wildlife habitat to simply enjoying it as it is. You and your circumstances determine the decisions you make for your woodland.*

*This publication aims to help women landowners better understand their woodlands and make informed decisions to meet their goals.*

You can **download** a PDF of this guide [HERE](#).

To get a printed copy of this useful guide  
please contact Paul Dolan

E-Mail: [rircd2283@gmail.com](mailto:rircd2283@gmail.com) or Phone: 401-500-0399



**Rhode Island Association  
of Conservation Districts**  
*Helping Rhode Island Conservation Districts Help Rhode Island*

**conserving  
natural resources**  
*for our future*  
2283 Hartford Avenue  
Johnston, RI 02919  
401-934-0840

- [Northern Rhode Island Conservation District \(NRICD\)](#) serves Providence County
- [Southern RI Conservation District \(SRICD\)](#) serves Kent and Washington Counties
- [Eastern RI Conservation District \(ERICD\)](#) serves Newport and Bristol Counties

## RHODE ISLAND DEPARTMENT OF ENVIRONMENTAL MANAGEMENT



The health and vitality of our lands, waters, and communities support our way of life and economy in Rhode Island. The Rhode Island Division of Agriculture and Forest Environment works to sustain, promote, and enhance Rhode Island's agricultural viability and preserve, manage, and promote healthy forests and community trees for today and for generations to come.

### RI DEM PROGRAMS INCLUDE

[ANIMAL HEALTH PROGRAM](#)  
[RI GROWN: EAT FRESH, BUY LOCAL](#)  
[PRODUCE SAFETY PROGRAM](#)  
[AGRICULTURE GRANT OPPORTUNITIES](#)

[LASA GRANT PROGRAM](#)  
[PESTICIDES PROGRAM](#)  
[URBAN FORESTRY PROGRAM](#)  
[FOREST HEALTH PROGRAM](#)

[WILD FIRE PROGRAM](#)  
[PEST ALERTS](#)  
[SPOTTED LANTERNFLY](#)  
[FOREST STEWARDSHIP](#)

## RHODE ISLAND RESOURCES FOR WOODLOT OWNERS



### **Rhode Island Forest Health Works Regional Conservation Partnership Program**

The RI Department of Environmental Management (RIDEM) Division of Forest Environment and ten partners will leverage over \$3.9M in 5 years under 2021 RCPP to permanently protect over 2,000 acres of critical, privately owned forest lands to combat fragmentation and improve wildlife habitat.

Funding is provided through a competitive process.

For more information about the next application cycle, please contact them.

[Ask.USDA.gov](https://ask.usda.gov) 1-833-ONE-USDA [askusda@usda.gov](mailto:askusda@usda.gov)

## Rhode Island Forest Conservators Organization

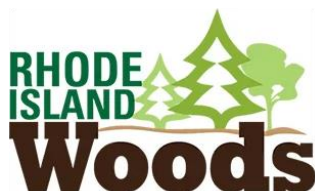
*Helping to Safeguard Rhode Island's Woodlands*



Rhode Island Forest Conservators Organization (RIFCO) is a non-profit organization dedicated to the protection and wise use of Rhode Island's woodland resources.

Sign up to get the [RIFCO](#) monthly e-newsletter  
["The Forest Conservationist"](#)

OR [Join RIFCO](#) and automatically receive the newsletter.



## Your Online Resource for RI Forest Information

Still more than half forested, Rhode Island has extensive and varied woodlands surrounding Narragansett Bay that contribute to the state's economy, environmental benefits, and quality of life.

The website is hosted and maintained by the University of Rhode Island, Department of Natural Resources Science, with the assistance of an advisory committee. This site provides information for landowners, businesses, and outdoor enthusiasts on forest stewardship, wildlife, science and policy, legacy planning, RI woods-related products, learning opportunities, and more. It also features information about Rhode Island forestry, including forest-related businesses, upcoming events and workshops, tree identification, new forestry technologies, and other educational tools. Throughout each section of the website you will find links to fact sheets and other organizations where you can learn more. [RI Woods](#) aims to be a hub of information for all experience levels and an avenue to resources that promote good stewardship and forest health.



[Rhode Island Tree Council](#)'s mission is to create healthy urban and community forests, which underpin the state's verdant ecological tapestry, support its vibrant economy, and enrich the lives of all Rhode Islanders.

RI Tree helps improve Rhode Island's tree resources, build healthy and vibrant urban forests, and educates citizens about urban forestry. The group offers a wide variety of programs and resources designed to educate woodland owners on the benefits and value of trees. [WATCH Video](#)



## RHODE ISLAND RESOURCES FOR WOODLOT OWNERS



The mission of the Center for Mediation is: To provide individuals, organizations, and businesses with constructive skills and processes to effectively resolve their differences.

[The Center for Mediation](#) is the provider for Rhode Island's Agricultural Mediation Program (RIAMP). This is the official USDA-certified program for our state.

This program offers confidential assistance to help resolve agricultural-related issues in a productive environment. For more than a decade, RIAMP has provided essential mediation services for agricultural loans, farm program compliance, and other agriculture-related issues to farmers and growers throughout Rhode Island.

Call 401-273-9999 from 9am to 4pm Mon-Fri or visit our [website](#)

## OTHER RESOURCES FOR WOODLOT OWNERS



The American Tree Farm Program

*We grow stewardship from the roots.*

### [Rhode Island Tree Farm Program](#)

The American Tree Farm System is a program for woodland owners who are committed to sustainably managing their woods for wood, water, wildlife and recreation. Each state program is run by a diverse group of partners, such as state agencies, non-profit organizations, volunteers, foresters and landowners.

To learn more, please contact **Marc Tremblay**,  
Phone: 401-568-3410 or Email: [mstremb@cox.net](mailto:mstremb@cox.net)



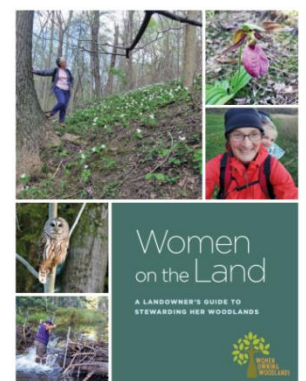
### [American Forest Foundation Newsletter](#)

Sign up and receive updates from the **AFF** and/or its signature programs: the [American Tree Farm System](#) (ATFS) and [My Land Plan](#)

*Unlocking the power of America's Family Forests to fight climate change.*

## UMassAmherst

[Women on the Land](#) intends to build a network of female landowners and stewards in Massachusetts and provide opportunities for education and connection. We host events throughout the year and encourage women to foster relationships with each other and their land.



# The Newsletter of RI RC&D

## The Rhode Island Resource & Development Area Council, Inc.

### Disclaimer: Please Note

This newsletter's purpose is threefold. Our primary purpose is to keep our readers informed about opportunities and resources which may be available to our readership. Our second purpose is to keep our readership informed about news, events, products, opinions, and information which may directly affect our readership, either adversely or beneficially. Our third purpose is to present our readers with information that they may find enlightening or entertaining.

The opinions and political positions represented in the newsletter do not reflect the opinions or political positions of the Rhode Island Resource and Development Area Council, Inc.; nor does RI RC&D advocate or endorse any of the opinions, positions, or products mentioned in the newsletter *except where specifically stated*.

### CONTACT RI RC&D

#### Rhode Island Resource Conservation & Development Area Council, Inc.



Website: <http://rircd.org>



**Paul Dolan, RI RC&D Area Director**  
[rircd2283@gmail.com](mailto:rircd2283@gmail.com)

**Jo-Anne Pacheco, Coordinator**  
*WOW (Women Owning Woodlands) Project*  
[Jo-Anne@rircd.org](mailto:Jo-Anne@rircd.org)

**Phone: 401-500-0399**

**RI RC&D Mailing Address:**  
2283 Hartford Avenue  
Johnston, RI 02919



**Rhode Island Association  
of Conservation Districts**  
*Helping Rhode Island Conservation Districts Help Rhode Island*

**conserving  
natural resources**  
*for our future*

2283 Hartford Avenue  
Johnston, RI 02919  
401-934-0840

[Northern Rhode Island Conservation District \(NRICD\)](#) serves Providence County  
[Southern Rhode Island Conservation District \(SRICD\)](#) serves Kent and Washington Counties  
[Eastern Rhode Island Conservation District \(ERICD\)](#) serves Newport and Bristol Counties

**Rhode Island USDA NRCS Outreach & Public Affairs — Julie Wright: 401-786-3884**